

**SMITHS MOTOR CYCLE EQUIPMENT**

**1965**

THREE-WHEELERS, "BUBBLE" CARS, INVALID CARRIAGES—see back cover



# SMITHS

## Motor Cycle Equipment — 1965

MAKE	MODEL & DESCRIPTION	SPEEDOMETER		MIL. INDICATOR	FLEXIBLE DRIVE (A)		GEARBOX	VARIABLES
		MILES	KILOM.		COMPLETE	LENGTH		
A.J.S.	1A CSR Sapphire Ninety	250 cc	SSM.200L/02	SSM.200L/03	DF.9110/00	5'2"	EG.5330/057	
	16 Sceptre	350 cc	SSM.300Z/00A	SSM.300Z/01A	DF.9110/00 DF.9111/03 (S)	5'5" 2'8"	EG.5330/257 EG.3568/95 (S)	
	1B Sultanan	500 cc						
	51 Swift	650 cc						
	51 CSR Hurricane	650 cc						
AMBASSADOR	53 CS	765 cc	SSM.300L/00A	SSM.300L/01A	DF.9110/00 DF.9111/03 (S)	5'5" 2'8"	EG.5330/257 EG.3568/95 (S)	
	16 C 1B CS Southsmer Screamer	350 cc 500 cc	SSM.300L/00A	SSM.300L/01A	DF.9110/00 DF.9111/03 (S)	5'7 1/2" 2'8"	EG.5330/267 EG.3568/95 (S)	
ARIEL	5 Star TS		SN.3170/46		DF.1111/75	3'2"		BUB 6 VOLT 40-621-685-11
	Super 15' TG Twin		SC.3303/42		DF.1111/75	3'2"		FILING BRACKET 51-674-109-01
ARIEL	Pixie Moped	50 cc	SSM.1100/04	SSM.1100/05	EP.7231/00	2'3"		
	Leader 15 Twin	250 cc	SSM.5003/00A (C)	SSM.5003/01A (C)	DF.9111/02	3'1"	EG.5351/00	TRIP RESET 41-348-203-30
BOND	Arrow 200 TG Twin (Standard)	199 cc	SSM.2000/00	SSM.2000/03	DF.9111/02	3'1"		
	Arrow Super 15 Twin (Sports)	250 cc	SN.3170/1A		DF.1111/02	3'8"		

A. See Chart for separate Inner and Outer Drives.

B.		C.
C. Trip Speedometer		H.
D.		J.
E. Optional		K.
F.		L.
		M.

MARKS	MODEL & DESCRIPTION	SPEEDOMETER		REV. INDICATOR	FLEXIBLE DRIVE (A)		GEAR BOX	VARIANTS
		MILES	KILOM		COMPLETE	LENGTH		
B.S.A.	B.1. Scooter	SM.3170/18	SM.3153/88		DF.1106/74	4'9 1/2"		
	B.2. Scooter				DF.1106/74	4'9 1/2"		
	B.1.S. Scooter		SM.3170/17		DF.7231/00	2'9"	EG.5346/421	
	B.2.S. Scooter		SSM.1100/01		DF.9110/00	4'10 1/2"	EG.5330/247	
	K.1. Beagle	75 cc	SSM.1100/01	SSM.2001/03		DF.9110/00	4'10 1/2"	TRIP RESET 41-118-203-10
	C.15 Star	250 cc	SSM.5002/03A(C)	SSM.2001/03		DF.9110/00	4'10 1/2"	
	D7 Star	175 cc	SSM.5002/03A(C)	SSM.2001/03		DF.9110/00	4'10 1/2"	
	C.15 Trials & Cat.		SSM.5002/03A(C)	SSM.2001/03		DF.9110/00	4'10 1/2"	
	C.15 Startire Roadster		SSM.5002/03A(C)	SSM.2001/03		DF.9110/00	4'10 1/2"	
	C.15 Startire Scrambler		SSM.5002/03A(C)	SSM.2001/03		DF.9110/00	4'10 1/2"	
B.40 Redburn Star		SSM.5002/03A(C)	SSM.2001/03		DF.9110/00	4'10 1/2"		
(B)	SS.80	250 cc	SSM.2001/02	SSM.2001/03		DF.9110/00	4'10 1/2"	
	SS.90	350 cc	SSM.2001/02	SSM.2001/03		DF.9110/00	4'10 1/2"	
	B.40	350 cc	SSM.2001/02	SSM.2001/03		DF.9110/00	4'10 1/2"	
	A.50 Star		SSM.4001/00A	SSM.2001/03		DF.9110/02	3'4"	TRIP RESET 41-118-125-79
	A.65 Star		SSM.4001/00A	SSM.2001/03		DF.9110/02	3'4"	TRIP RESET 41-118-203-10
	A.50 Royal Star		SSM.4001/00A	SSM.2001/03		DF.9110/02	3'4"	TRIP RESET 41-118-203-10
	A.65 Royal Star		SSM.4001/00A	SSM.2001/03		DF.9110/02	3'4"	TRIP RESET 41-118-203-10
	A.50 Cyclone		SSM.5002/03A	SSM.2001/03		DF.9110/00	2'9"	
	A.65 Spitfire Hornet		SSM.5002/03A	SSM.2001/03		DF.9110/00	2'9"	
	A.65 Thunderbolt Rocket		SSM.5002/03A	SSM.2001/03	RSM.3003/02A (GB)	DF.9110/00	2'9"	
(B)	A.65 Lightning Rocket		SSM.5002/03A	SSM.2001/03	RSM.3003/04A (US)	DF.9110/00	2'9"	
	A.65 Lightning Rocket		SSM.5002/03A	SSM.2001/03	RSM.3003/06 (JB)	DF.9110/00	2'9"	
	A.65 Lightning Rocket		SSM.5002/03A	SSM.2001/03	RSM.3003/06 (JB)	DF.9110/00	2'9"	
	A.65 Lightning Rocket		SSM.5002/03A	SSM.2001/03	RSM.3003/06 (JB)	DF.9110/00	2'9"	
	A.65 Lightning Rocket		SSM.5002/03A	SSM.2001/03	RSM.3003/06 (JB)	DF.9110/00	2'9"	
	A.65 Lightning Rocket		SSM.5002/03A	SSM.2001/03	RSM.3003/06 (JB)	DF.9110/00	2'9"	
	A.65 Rocket (Lamp Fitting)		SSM.4002/00A	SSM.4001/01A (C)	RSM.3003/06	DF.9110/02	3'4"	TRIP RESET 41-118-125-79
	Daytona Racer	500 cc				N.O.M. (K)		

A. See Chart for separate Inner and Outer Drives	
G.	C-3,000 rps
H.	C-5,000 rps
J.	C-10,000 rps
K.	N.O.M. = Not Our Manufacture.
L.	
M.	



MAKE	MODEL & DESCRIPTION	SPEEDOMETER		REV. INDICATOR	FLEXIBLE DRIVE (A)		SERIAL NO.	VARIOS	VALUES
		MI/SS	X1100		COMPLETE	LENGTH			
GUYTON	Valcan	SM.3170/02	SM.3170/03		SP.1111/15	3'0"			
	Merold 250 cc } Double Gloster 250 cc } Continental 250 cc } Continental Deluxe 250 cc } Corsair 250 cc }	SM.3170/02	SM.3170/03		SP.1111/15	3'0"			
	Conquest	SM.1000/00A (C)			SP.9111/00	4'6"	SG.0500/01	GEAR KING 51-812-110	FLEXION 51-812-120 TRIP MESSOR 43-118-125-52
	Trials	SM.3170/14			SP.1111/15	3'0"			(L)
	Teistar Racer			SM.1100/02	SP.1111/15	3'8"	SG.1507/03 SG.2110/00 (D)		(L)
	Postenger	SM.3170/02	SM.3170/03		SP.1111/15	3'6"			(K)
	Cupella Scooter Cupella Scooter	SM.3171/11			SP.1110/00	3'1"	SG.5117/00.7		(K)
	Cupella Scooter Cupella Scooter	SM.3171/00			SP.1110/00	3'1"	SG.5117/00.7		(K)
	Demaster HS Demaster SS	SM.3303/11			SP.1111/15	3'2"			(K)
	MX 9 TS	SM.3170/46			SP.1111/15	3'2"		BULB 6 VOLT 43-621-085-11	(K)
MX 17 Trials	SM.3301/02			SP.1110/20	5'0"			(L)	
250 Sports TS Twin Silomite	SM.3303/42			SP.1111/15	3'2"			(K)	
Harret Racer			SM.1100/03	SP.1111/15	2'5"		SG.1507/03	(L)	

A.	See Chart for separate Inner and Outer Drives	G.
B.		H.
C.	Trip Speedometer	J.
D.	Angle Drive (Instrument End)	K.
E.		L.
F.		M.

MAKE	MODEL & DESCRIPTION	SPEEDOMETER		REV. INDICATOR	FLEXIBLE DRIVE (A)		GEARBOX	VARIORS
		KILOPS	KILOS		COMPLETE	LENGTH		
ENFIELD	Turbo Twin Turbo Twin Sports	250 cc } 250 cc }	SSM, 2000/02	SSM, 2000/03	EP, 9111/00	3'4"		
	Cruiser Super 5 Cruiser Sports	250 cc } 250 cc }	SSM, 2000/00	SSM, 2000/03	EP, 9111/00 EP, 9111/00	4'5" 3'7"	36-5530/847 36-1508/04	
	Continental Continental GT	250 cc } 350 cc }	SC, 1304/04	SC, 1304/06	EP, 1110/21	4'4"	36-5533/247	
	Trials	250 cc } 250 cc }	SC, 1304/04	SC, 1304/06	EP, 1110/30	4'9"	36-5533/247	
	I.S.D.T.	250 cc	SSM, 3002/00	SSM, 4001/01 (C)	EP, 9110/00	4'6"	36-5533/247	TRIP METER 42-118-125-79
	Interceptor (U.K. Model)	736 cc	SSM, 4001/00 (C)	SSM, 4001/01 (C)	EP, 9110/00	4'5"	36-5533/247	
	Interceptor	736 cc	SSM, 3002/00	SSM, 3002/01	EP, 9110/00	4'7"	36-5533/247	
	Interceptor	736 cc	SSM, 3002/00	SSM, 3002/01	EP, 9110/00	4'10"	36-5533/247	
	Racer	250 cc	SSM, 3002/00	SSM, 3002/01	EP, 9111/00 EP, 1111/15	3'7" 2'10"	36-1506/01 36-1507/03	A/V MOUNTING RING MG, 1003/00
	EXCELSIOR	U.L. T.S.	150 cc	SSM, 2000/00	SSM, 2000/01	EP, 9110/00	4'5 1/2"	36-5533/227
FRANCIS & BARNETT	67 Falcon	199 cc	SSM, 2000/02	SSM, 2000/01	EP, 9110/00	4'8"	36-5530/847	
	88 Falzar 90 Falzar Sports	150 cc } 150 cc }	SN, 3170/42	SSM, 2000/00	EP, 1110/21	4'0"	36-5530/247	
	89 Cruiser Twin	250 cc	SSM, 2000/00	SSM, 2000/01	EP, 9111/00	3'8"		
	91 Cruiser Sports Twin	250 cc	SSM, 2000/02	SSM, 2000/01	EP, 9111/00	3'4"		
	92 Trials T3		SSM, 2000/00	SSM, 2000/00	EP, 9110/00	4'6"	36-5530/1047	

A.	See Chart for separate Inner and Outer Drives	G.
B.	U.S.A. only	H.
C.	Trip Speedometer	J.
D.		K.
E.	Optional	L.
F.		M.



MAKE	MODEL & DESCRIPTION	SPEEDOMETER		REV. INDICATOR	FLEXIBLE DRIVES (A)		GASKET	VARIOUS	VARIOUS						
		MILES	KILOM		COMPLETS	LENGTH									
INVAJUR (GREENIES)	20 TE Trials 20 TE Trials 24 TFS Trials	SSM.2001/00			EP. 9111/00	5'0"	86.2504/01	GEAR RING 31-812-110	VARIOUS 9/8 PINION 31-813-125						
	(B) { 20 TE Trials 24 TE Trials 24 TFS Trials									SSM.5002/00 (OK)	EP. 9111/00	5'0"	86.2504/01	GEAR RING 31-812-110	VARIOUS 9/8 PINION 31-813-125
		20 DC 25 DC 25 DCX 25 DD 32 DC 32 DCX 32 DD Silverstone Baer 250 cc	SSM.2001/00	EP. 9111/00	4'8"	86.2504/01	GEAR RING 31-812-110	VARIOUS 9/8 PINION 31-813-125							
	SCL Scooter								EN. 3170/47	EP. 1111/25	2'2"	86.1507/03 86.2110/00 (D)	GEAR RING 31-812-110	VARIOUS 9/8 PINION 31-813-125	
															LI Comet
		L20 L20 S	SSM.2001/02	EP. 9110/00	4'7"	86.5330/847	GEAR RING 31-812-110	VARIOUS 9/8 PINION 31-813-125							
	M25								SSM.2001/02	EP. 9110/00	4'8"	86.5330/847	GEAR RING 31-812-110	VARIOUS 9/8 PINION 31-813-125	
															M25 S
		M25 T	SSM.2001/02	EP. 9110/00	3'6"	86.5330/847	GEAR RING 31-812-110	VARIOUS 9/8 PINION 31-813-125							
									SSM.2001/00	EP. 9110/00	4'5"	86.5330/1047	GEAR RING 31-812-110	VARIOUS 9/8 PINION 31-813-125	

A.	See Chart for separate Inner and Outer Drives	G.
B.	U.S.A. only	H.
C.	Trip Speedometer	J.
D.	Angle Drive (Instrument End)	K.
E.		L.
F.		M.

MAKE	MODEL & DESCRIPTION	SPREDDOMETER		REV. INDICATOR	FLEXIBLE DRIVE (A)		GEARBOX
		MILES	KILAS		COMPLETE	LENGTH	
MATCHLESS	G 2 CSR 250 cc	SSM, 2001/02	SSM, 2001/03		DF, 9110/00	5'2"	BG, 5330/257
	G 3 Keroucy 350 cc						
	G 12 Malestic 650 cc						
	G 12 CSR Monarch 650 cc	SSM, 3002/00A	SSM, 3002/01A	MSM, 3003/00 (R)	DF, 9110/00 DF, 9111/03	5'5" 2'8"	BG, 5330/257 BG, 1500/05
	G 80 Major 500 cc						
	G 12 CSR Monarch 650 cc	SSM, 3002/00A	SSM, 3002/01A	MSM, 3003/00 (R)	DF, 9110/00 DF, 9111/03	5'5" 2'8"	BG, 5330/257 BG, 1500/05
	G 15 745 cc						
	G 15 CSR 745 cc	SSM, 3003/00A	SSM, 3003/01A	MSM, 3003/00 (R)	DF, 9110/00 DF, 9111/03	5'5" 2'8"	BG, 5330/257 BG, 1500/05
	N 15 CR						
	G 3C 350 cc	SSM, 3001/00A	SSM, 3001/01A	MSM, 3003/00 (R)	DF, 9110/00 DF, 9111/03	5'7 1/2" 2'8"	BG, 5330/1067 BG, 1500/05
	G 80 CS 500 cc						
	Jubilee Navigator 250 cc	SSM, 2001/02	SSM, 2001/03		DF, 9110/00	5'2"	BG, 5330/257
	350 cc						
	534 cc	SSM, 2001/02	SSM, 2001/03		DF, 9110/00	5'2"	BG, 5330/257
NORTON	88 cc 437 cc	SSM, 3032/00A	SSM, 3032/01A	MSM, 3003/00 (R)	DF, 9110/00 DF, 9111/03	5'7 1/2" 2'8"	BG, 5330/257 BG, 1500/05
	650 cc 647 cc						
	650 cc 745 cc	SSM, 3001/00A	SSM, 3001/01A	MSM, 3003/00 (R)	DF, 9110/00 DF, 9111/03	5'9" 2'8"	BG, 5330/257 BG, 1500/05
	Atlas						
	50 cc, II	SSM, 3002/00A	SSM, 3002/01A	MSM, 3003/00 (R)	DF, 9110/00 DF, 9111/03	5'5" 2'8"	BG, 5330/257 BG, 1500/05
	25 2 cc, II						
	437 cc						

A. See Chart for separate Inner and Outer Drives.	G.
B.	H.
C.	J.
D.	K.
E. Optional	L.
F.	M.



MAXS	MODEL & DESCRIPTION	SPEEDOMETER		REV. INDICATOR	FLEXIBLE DRIVE (A)		GEARBOX	VARIABLES	VARIABLES
		MILES	KILOM.		COMPLETE	LENGTH			
HARLEY & DAVIDSON	35 TS Twin	SN. 3170/02	SN. 3170/03		DF. 1111/15	3'2"	BG. 2517/00	GEAR KING X1-812-117-01	
	100 Deluxe	SSM. 3002/00A	SSM. 3002/01A		DF. 9111/00	5'6"			
	130 S								
	100 Standard								
	150 Super Deluxe								
	175 "								
	200 "								
	3150 Self Start								
	3175 "								
	3200 "								
TRIUMPH	Super Deluxe Twin	SN. 3170/51			DF. 1111/15	4'8"			
	Titan Scooter	SSM. 1100/00	SSM. 1100/01		DF. 7250/00	2'11 1/2"			
	TTC Tiger Cub	SSM. 2001/00	SSM. 2001/05		DF. 9110/00	4'10"	BG. 5330/84.7		
	TTC 8H Tiger Cub				DF. 9110/00	4'10"	BG. 5330/24.7		(K)
	TTC SS				DF. 9158/00	2'10 1/2"			
	TR 20 Trials Cub								
	TTC Scrambles								
	Tigras Single T51	SN. 3170/28	SN. 3170/56		DF. 1106/14	4'8 1/2"		TRIP RESET 41-118-127-72	
	Tigras Twin T52	SSM. 5002/00A (C)	SSM. 5002/01A (C)		DF. 9110/00	4'10"	BG. 5330/887	TRIP RESET 41-118-203-10	
	TJA Twenty One								
50A Speed Twin	SSM. 5001/00A (C)	SSM. 5001/01A (C)		DF. 9110/00	4'10"	BG. 5330/287	TRIP RESET 41-118-127-72		
TTC Tiger Sports									
TTC SS Tiger Sports									
TTC SC Tiger Sports									
TTC SS Trophy	SSM. 5001/00A (C)	SSM. 5001/01A (C)		DF. 9106/01	3'1 1/2"		TRIP RESET 41-118-203-10		
TTC Bonneville				DF. 9158/00	2'10 1/2"		TRIP RESET 41-118-127-72	(K)	
6T Thunderbird	SSM. 5002/00A (C)	SSM. 5002/01A (C)		DF. 9106/01	3'8"				

A. See Chart for separate Inner and Outer Drives	G.
B.	H.
C. Trip Speedometer	J.
D.	K. Inner Flex End 31-371-358-15 and Flex Washer 51-501-101 also required.
E. Optional	L.
F.	M.



MAKE	MODEL & DESCRIPTION	SPEEDOMETER		F.F.V. INDICATOR	FLEXIBLE DRIVE (A)		CLEARANCE	FUEL TANK
		MILES	KILOMETERS		COMPLETE	LENGTH		
VELOCE	Viceroy Scooter 248 cc	SM. 3173/32			DF. 1111/17	5'7"		
	12 Mk. III	SSM. 2000/00			DF. 9111/01	2'9"		
	125 Vegas		SSM. 2000/03		DF. 9110/00	5'3"	BG. 5303/11	TRIP RESET
	Viper	SSM. 4001/00A (C)	SSM. 4001/01A (C)	SSM. 3003/03 (S)	DF. 9111/00 (S)	3'0"	BG. 1507/02 (S)	41-118-125-37
	Viper Clubman							
	Sprumbler							
	MSS							
	Venom							
	Venom Clubman							
	Endurance							
Sprumbler								
	Venom Thunder	SSM. 5001/00A (G)	SSM. 5001/01A (G)	SSM. 3003/03 (S)	DF. 9110/00	5'3"	BG. 5303/11	TRIP RESET
					DF. 9111/00 (S)	3'0"	BG. 1507/02 (S)	41-118-203-10

A. See Chart for separate Inner and Outer Drives

G.
H.
I.
J.
K.
L.
M.

C. Trip Speedometer

D.

E. Optional

F.

# FLEXIBLE DRIVE CHART

Flexible Drive (Complete)	Inner Flexible Drive (Only)	Outer Flexible Drive (Only)	Flexible Drive (Complete)	Inner Flexible Drive (Only)	Outer Flexible Drive (Only)
DF. 1106/14	DI. 1124/00	DO. 1106/14	DF. 7231/00	(Non Detachable)	
DF. 1110/00	DI. 1110/00	DO. 1110/00	DF. 7250/00	(Non Detachable)	
DF. 1110/20	DI. 1124/00	DO. 1110/20	DF. 9106/01	DI. 1124/05	DO. 9106/01
DF. 1110/21	DI. 1124/00	DO. 1110/21	DF. 9110/00	DI. 1124/05	DO. 9110/00
DF. 1110/24	DI. 1124/00	DO. 1110/24	DF. 9110/02	DI. 1124/06	DO. 9111/00
DF. 1110/30	DI. 1124/00	DO. 1110/30	DF. 9111/00	DI. 1124/06	DO. 9111/01
DF. 1111/00	DI. 1110/00	DO. 1111/00	DF. 9111/01	DI. 1124/06	DO. 9111/02
DF. 1111/02	DI. 1110/02	DO. 1111/02	DF. 9111/02	DI. 1124/06	DO. 9111/03
DF. 1111/15	DI. 1111/00	DO. 1111/09	DF. 9111/03	DI. 1124/06	DO. 9111/03
DF. 1111/17	DI. 1111/00	DO. 1111/11	DF. 9158/00	DI. 1124/07	DO. 9158/00

The above chart shows the code numbers of the separate inner and outer flexible drives which form the complete flexible drives listed in the specification section of this booklet.



# SMITHS

## Motor Cycle Equipment

Illustrated on these pages is a representative range of the most popular types of motor cycle equipment manufactured by Smiths.

Note: All Smiths motor cycle speedometers are available to register either miles or kilometers per hour.

### Speedometer 3" Chronometric Type

The movement is contained in a heavy pressed steel case, specially treated internally and externally against rust. The case is finished in black enamel and the screwed-on bezel is polished chromium plate. Also available with flange bezel and cadmium finished case for nacelle or headlamp installation.

Dial black with white figures and available with or without internal illumination.



### 60 mm. Speedometer

Nemag movement also for lightweight motor cycles. Strap or handle-bar fixing. Variety of dial colourings to choose from.

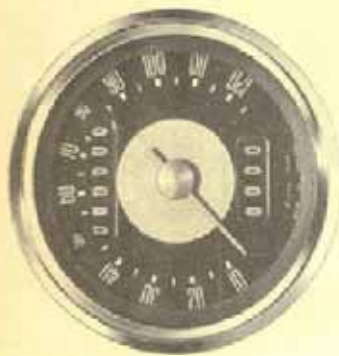
### 60 mm. Revolution Indicators

Revolution Indicators to match the 60 mm. speedometer are available. Maximum revolutions per minute, ratio and rotation available in any combination of the following:

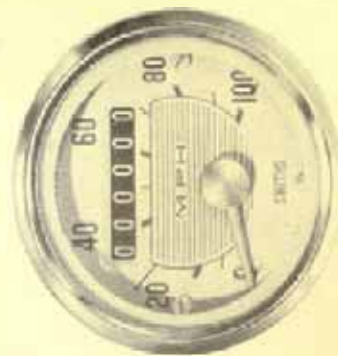
MAX. R.P.M. 10,000 12,000 16,000

RATIO 2:1 4:1 4:1

ROTATION Clockwise or anti-clockwise.



For full details of matching 60 and 80 mm Revolution Indicators, see separate leaflet Ref. No. S.909.



### 80 mm. 'Shallow' Speedometer.

Magnetic Type with Anti-vibration mounting incorporated in the instrument case and fully geared counter assembly to eliminate 'slip' or 'jumping'.

The movement is contained in a pressed steel case, specially treated internally and externally against rust. White figures, red pointer on duogrey dial.

Provision for internal illumination. Suitable Flexible Drive, DF.9110/00 or DF.9111/00 Series.

### 60 mm. 'Shallow' Speedometer.

Magnetic Type for Lightweight Motor Cycles. Anti-vibration mounting incorporated in the instrument case and fully geared counter assembly, to eliminate 'slip' or 'jumping', are important features of these new instruments.

Light grey dial with dark grey figures and red pointer. Polished Stainless Steel bezel. Internal illumination.

Suitable Flexible Drive, DF.9110/00 or DF.9111/00 Series.

### 3" Revolution Indicators

Chronometric movement. Black dial, white figures and pointer, chrome bezel.

Right angle drive can be built in. A maximum hand may be incorporated if required.

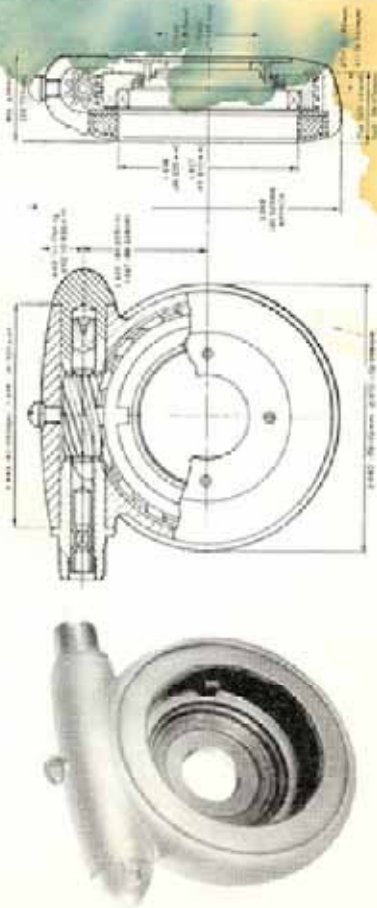
Maximum revolutions per minute, ratio and rotation available in any combination of the following:

MAX. R.P.M. 8,000 9,000 10,000 12,000

RATIO 2:1 4:1 4:1 4:1

ROTATION Clockwise or anti-clockwise





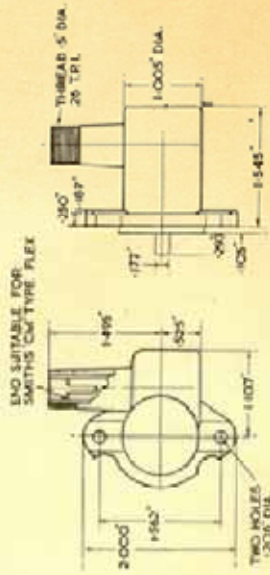
**Gear Box Code No. BG.5330 & BG.5331 Series**  
(Replacing 52283/50-88, BG.5101 & BG.5103 Series)

This hub gear box has a thicker body section than those in the BG. 5303 Series (Previously 52283 1-49 Series) and uses the larger felt seal. It can be used where the hub is slotted to provide the necessary engagement or where other provision can be arranged. Clockwise or anti-clockwise input. Ratios: 1:1 & 2:1  
Suitable Flexible Drive DF.9110 or DF.9111 Series.



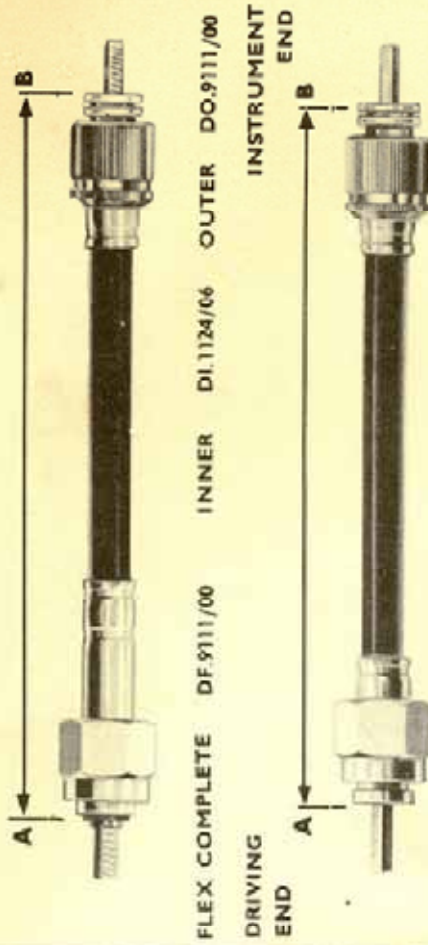
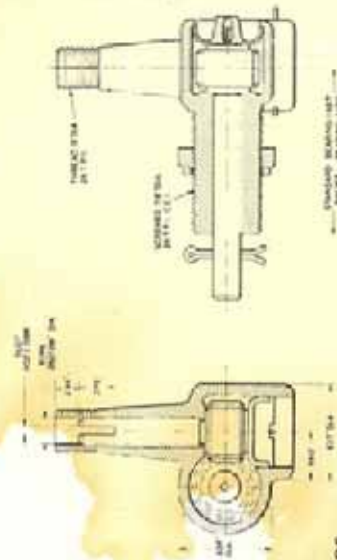
**Gear Box Code No. BG. 1508 Series (Replacing 70549 Series)**

These gear boxes reverse the rotation of the shaft to which they are attached. The rotation is determined by looking immediately on to the end of the engine spindle with which the gear box or flexible drive is engaged.  
Plain phosphor bronze bearings. Ratios 1:1 and 2:1.  
Suitable Flexible Drive DF. 1111/15 (Black PVC) or DF. 1111 12 (Grey PVC)



**Brake Drum Fitting Gear Boxes**

**Basic Code**  
BG.2504 Series (Replacing 34159 Series) Short Reach, Right Hand Gears  
BG.2511 Series (Replacing 70458 Series) Long Reach, Left Hand Gears  
BG.2500 Series (Replacing 25224 Series) Long Reach, Right Hand Gears  
BG.2510 Series (Replacing 70458 Series) Short Reach, Left Hand Gears  
Boxes available for either external gear ring drive or for internal brake-drum fitting, with left or right hand gears to maintain clockwise output.  
Suitable Flexible Drive for these right angle gear boxes: DF. 1111/15 (Black PVC) or DF. 1111 12 (Grey PVC)



The nominal length of a flexible drive is measured between points 'A' and 'B'



THREE SPEEDS & INVALID CARRIAGES

MAKE	MODEL & DESCRIPTION	SPEEDOMETER		REV. INDICATOR	FLEXIBLE DRIVE (A)		GEAR BOX	GEAR RING	BRAKE POSITION	GEARBOX BRACKET	
		MILES	KILOM		COMPONENTS	LENGTH					
T & F BARRETT	Invalid Carriage	SN.3170/52			DE.1111/17	3'0"	36.2507/01	31-812-303-02			
BOND	MX '0' 2/3 Seater Tourer	SN.A.352/00 (B) SN.A.352/01				8'6"					
	MX '0' 2/3 Seater Coupe										
	MX '0' 4 Seater Saloon										
	MX '0' 4 Seater Van										
	MX '0' 4 Seater Car										
SCOOTER-CAR (MOTORCYCLE)	TS Deluxe Three Wheeler 200 cc	SN.3170/05			DE.1111/02	6'9 1/2"					
STANLEY ENGINEERING	TS Deluxe Twin Three Wheeler 250 cc	SN.3170/15			DF.1111/02	6'6"					
	MX 7 Invalid Carriage	SN.3170/21			DE.1111/00	8'0"	36.2504/01	31-811-517-02	41-280-118-00	31-354-600-00	
TIFFEN	Delta Invalid Carriage	SN.3170/53			DF.1111/25	8'0"	36.2507/09			41-280-118-00	

A. See Chart for separate Inner and Outer Drives		G.
B. Fitted to Van only		H.
C.		J.
D.		K.
E.		L.
F.		M.

# SMITHS

## MOTOR ACCESSORY DIVISION

The Motor Accessory Division of S. Smith & Sons (England) Ltd

HEAD OFFICE  
CRICKLEWOOD WORKS  
LONDON NW2  
Telephone: Glaston 3333

SALES AND SERVICE  
50 OXGATE LANE  
LONDON NW2  
Telephone: Glaston 8030

Telegrams: Speedofac, Londcn. Telex 22671.