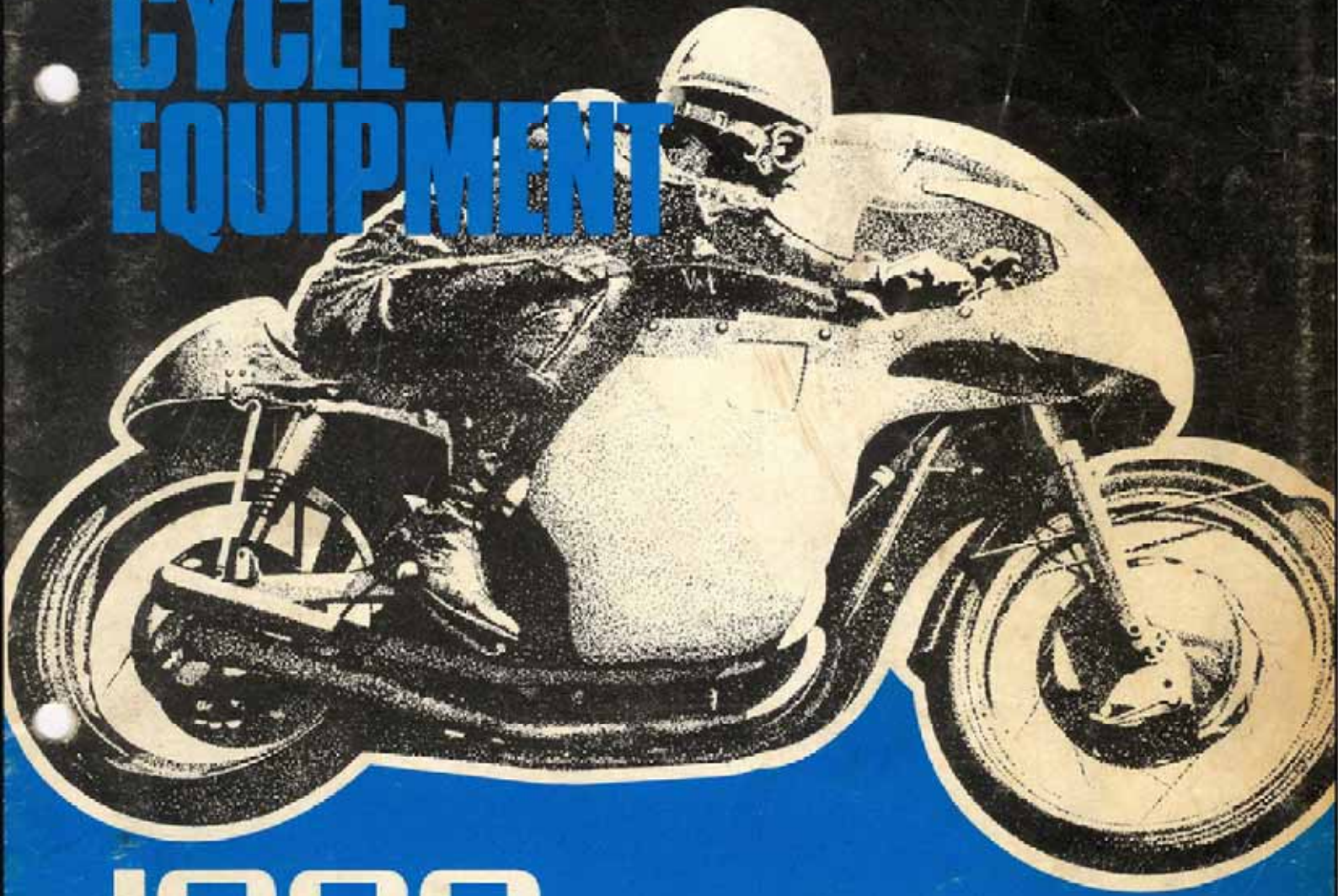


# SMITHS MOTOR CYCLE EQUIPMENT



# 1966

Three wheelers, Invalid carriages – see back cover...

# SMITHS

## Motor Cycle Equipment — 1966

MAKE	MODEL & DESCRIPTION	SPEEDOMETER		REV. INDICATOR	FLEXIBLE DRIVE (A)		GEAR BOX	VARIORS
		MILES	KILOG		COMPLETE	LENGTH		
A.J.S.	14 SBR Sapphire Ninety	248 cc	SSM.2001/02	SSM.2001/05	DF.9110/00	5'2"	SG.5330/057	
	16 Sceptre	348 cc			DF.9110/00	5'5"	SG.5330/057	
	18 Statesman	497 cc	SSM.2002/00A	SSM.2002/01A	DF.9111/03	2'8"	SG.1508/05	
	21 Swift 21 CSR Hurricane	646 cc 646 cc			DF.9110/00 DF.9111/03	5'7 1/2" 2'8"	SG.5330/206 SG.1508/05	
(B)	182C	497 cc	SSM.2001/00A	SSM.2001/01A	DF.9110/00 DF.9111/03	5'7 1/2" 2'8"	SG.5330/206 SG.1508/05	
(B)	21CSR	646 cc			DF.9110/00	5'5"	SG.5330/257	
(B)	21CS	745 cc	SSM.2001/00A	SSM.2001/01A	DF.9111/03	2'8"	SG.1508/05	
(B)	21	745 cc			DF.1111/15	3'2"		BULB 6 VOLT 40-621-005-11
AMBASSADOR	5 Star TS		SN.2170/45					FIXING BRACKET 33-674-209-01
	Super 'S' TS Twin		SC.2133/42		DF.1111/15	3'2"		
ARIEL	Pisla Moped	50 cc	SSM.1100/04	SSM.1100/05	DF.7231/00	2'3"	SG.5351/00	
	Leader TS Twin	250 cc	SSM.5003/00A (C)	SSM.5003/01A (C)	DF.9111/02	3'1"		TRIP ASSEMBLY 41-148-207-10
BOND	Arrow 200 TS Twin (Standard)	199 cc	SSM.2001/00	SSM.2001/03	DF.9111/02	3'1"		
	Arrow Super TS Twin (Sports)	250 cc	SN.2170/44		DF.1111/02	3'8"		

A. See Chart for Separate Inner and Outer Drives	G.
B. U.S.A. Market.	H.
C. Trip Speedometer	I.
D.	J.
E. Optional	K.
F.	L.

MODEL	MODEL & DESCRIPTION	SPEEDOMETER		REV. INDICATOR	FLEXIBLE DRIVES (A)		SEAR BOX	TRIP RESET
		MTL50	K1108		COMPLIETS	LENGTH		
D.S.A.	D7 Bantam Super	175 cc	SDM.2001/00	SDM.2001/03	DF.9110/00	4.110 <sup>1/2</sup> "	80.5330/04.7	
	C15 Star	249 cc	SDM.2001/00	SDM.2001/03	DF.9110/00	5.1"	80.5330/04.7	
	C15 Sportman	249 cc	SDM.2001/02	SDM.2001/03	DF.9110/00	5.1"	80.5330/04.7	
	C25	249 cc	SDM.2001/02	SDM.2001/03	DF.9110/00	5.1"	80.5330/04.7	
	B40 Star	350 cc	SDM.2001/02	SDM.2001/03 (P)	DF.9110/00	5.1"	80.5330/04.7	
	M4. Diaburo	440 cc	SDM.5001/03A (C)	SDM.5001/04A (C)	EF.9110/00 EF.9110/00	5.1" 2.9"	80.5330/04.7	41-148-203-10
	A.50 Royal Star	500 cc	SDM.5001/03A (C)	SDM.5001/04A (C)	EF.9110/02 EF.9110/00	5.6" 2.9"	80.5330/111	41-148-203-10
	A50 Tazp	500 cc	SDM.5001/03A (C)	SDM.5001/04A (C)	EF.9110/02 EF.9110/00	5.6" 2.9"	80.5330/111	41-148-203-10
	A65 Thunderbolt	650 cc	SDM.5001/03A (C)	SDM.5001/04A (C)	EF.9110/02 EF.9110/00	5.6" 2.9"	80.5330/111	41-148-203-10
	A65 Lightning	650 cc	SDM.5001/03A (C)	SDM.5001/04A (C)	EF.9110/02 EF.9110/00	5.6" 2.9"	80.5330/111	41-148-203-10
	A65 Lightning (Hap-West) (U.S.A. only)	650 cc	SDM.5001/03A (G)	SDM.5001/04A (C)	EF.9110/02 EF.9110/00	5.6" 2.9"	80.5330/111	41-148-203-10
	A65 Spitfire Std. A65 Spitfire Mk. II	650 cc 650 cc	SDM.5001/03A (G)	SDM.5001/04A (C)	EF.9110/02 EF.9110/00	5.6" 2.9"	80.5330/111	41-148-203-10

A.	See Chart for separate Inner and Outer Drives	G.
B.		H.
C.	Trip Speedometer	J.
D.		K.
E.	Optional	L.
F.	As SDM.2001/03 but with Dual Chrome Metal	M.

MAKE	MODEL & DESCRIPTION	SPEEDOMETER		REV. INDICATOR	FLEXIBLE DRIVE (A)		CRANKBOX	VARIABLES	VARIABLES
		MILES	KILOG		COMPLETE	LENGTH			
COTYUN	Vulcan 297 cc	SN. 3170/02	SN. 3170/03		DP. 1111/15	3'0"	36.2504/01		
	Herold 250 cc				DP. 1111/15	3'6"			
	Double Glaster 250 cc				DP. 1111/15	3'0"			
	Continental 250 cc				DP. 1111/15	3'8"	35.1507/03 36.2110/00 (1)		
	Corssair 250 cc				DP. 1111/15	3'6"			
	Conquest 250 cc	SSM.4001/00A (C)		RE. 1104/02					FLINCH JA-813-12C TRIP RODENT AL-118-125-52
	Trials 250 cc	SN. 3170/14							(1)
	Telstar Racer 250 cc								(5)
	Messenger 325 cc	SN. 3170/02	SN. 3170/03						(5)
	Capella Scooter 175 cc	SN. 3171/01							(5)
Capella Scooter 200 cc								(5)	
Capella Scooter 175 cc	SN. 3172/00				DP. 1110/00	3'1"	36.5117/04.7		
Capella Scooter 200 cc					DP. 1110/00	3'1"	36.5117/04.7		
Demster ME 250 cc	SC. 3303/41				DP. 1111/15	3'2"			
Demster SE 250 cc					DP. 1111/15	3'2"			
ME 9 TS	SN. 3170/45				DP. 1110/00	5'0"			
ME 17 Trials	SC. 1100/02				DP. 1111/15	3'2"			
250 Sports TS Twin Delomite	SC. 3303/42				DP. 1111/15	3'2"			
Hornet Racer 250 cc				RE. 1104/01	DP. 1111/15	2'9"	36.1507/03		

A.	See Chart for separate Inner and Outer Drives	G.
B.		H.
C.	Trip Speedometer	J.
D.	Angle Drive (Treatment End)	K.
E.		L.
F.		M.

G. Tank Unit PT. 5786/05 also required for Deluxe Model  
 H. Mounting Ring W6.1003/00 also required.  
 I. Fixing Bracket J1-674-109-01 also required

MAKE	MODEL & DESCRIPTION	SPEEDMASTER		REV. INDICATOR	PIECEWISE DRIVE (A)		GEARBOX	VARIANTS
		MILES	KILOS		COMPLETE	LENGTH		
HAYFIELD	Turbo Twin 250 cc } Turbo Twin Sports 250 cc }	SSM.2001/02	SSM.2001/03		DF.9111/00	3'4"		
	Cruiser Super 5 250 cc } Cruiser Sports 250 cc } Continental 250 cc } Continental GT 350 cc }	SSM.2001/00	SSM.2001/05	SSM.2001/00 (B)	DF.9111/00 DF.9111/00	4'5" 3'7"	BG.5130/84.7 BG.1508/04	
	Clipper Olympic 250 cc } 250 cc }	SC.1304/04	SC.1304/06		DF.1110/21	4'4"	BG.5131/24.7	
	Clipper airflow 250 cc	SC.1304/04	SC.1304/06		DF.1110/30	4'5"	BG.5131/24.7	
	Trials 250 cc	SSM.3002/00			DF.9110/00	4'6"	BG.5131/24.7	
	I.S.P.T. 250 cc	SSM.4001/00 (C)	SSM.4001/01 (C)		DF.9110/00	4'5"	BG.5131/24.7	TRIP BESSIE 42-118-125-79
	Interceptor (U.K. Model) 736 cc	SSM.3002/00	SSM.3002/01		DF.9110/00	4'7"	BG.5131/24.7	
	Interceptor 736 cc	SSM.3002/00	SSM.3002/01		DF.9110/00	4'10"	BG.5131/24.7	
	Interceptor 736 cc	SSM.3002/00	SSM.3002/01	SSM.3004/02 (B)	DF.9111/00	3'7"	BG.1506/01	
	Racer 250 cc	SSM.3002/00	SSM.3002/01	BH.1102/00	DF.1111/15	2'10"	BG.1507/03	A/V MOUNTING RING MS.1903/00
SUGEL3103	U.14 T.S. 150 cc	SSM.2001/00			DF.9110/00	4'5 1/2"	BG.5131/22.7	
	87 Falco 195 cc	SSM.2001/02			DF.9110/00	4'8"	BG.5130/84.7	
FRANCIS & BARNETT.	88 Pulsar 150 cc }	SN.5170/44			DF.1110/24	4'0"	BG.5130/24.7	
	90 Pulsar Sports 150 cc }	SSM.2001/00			DF.9111/00	3'8"		
	89 Cruiser Twin 250 cc	SSM.2001/02			DF.9111/00	5'4"		
	91 Cruiser Sports Twin 250 cc	SSM.2001/00			DF.9110/00	4'6"	BG.5130/104	
92 Trials TS								

A. See Chart for separate Inner and Outer Drives	G.
B. U.S.A. only	H.
C. Trip Speedometer	J.
D.	K.
E. Optional	L.
F.	M.

MAKE	MODEL & DESCRIPTION	SERIES/INITIALS		MILES	KILOS	MOT. INDICATOR	FASIBLES DRIVE (A)		CLASBOX	VARIABLES	VARIABLES	
		COMPARTS	LE-PTH									
INFLUOR (GROUPS)	20 TE Trials 20 TE Trials 24 TFS Trials	197 ee 250 ee 250 ee	SEN.2004/00				DF.9111/00	5'0"	86.2504/01	GRAB RING 31-812-110	G/B FINION 31-813-125	
	(B) { { {	20 TE Trials 24 TE Trials 24 TFS Trials		SEN.5002/00 (EX)				DF.9111/00	5'0"	86.2504/01	GRAB RING 31-812-110	G/B FINION 31-813-125
		(B) { {	24 MD 24 MD6	250 ee 250 ee	SEN.5002/00 (EX)			DF.9111/00	5'0"	86.2504/01	GRAB RING 31-812-110	G/B FINION 31-813-125
			JAMES	20 DG 25 DG 25 DCX 25 DD 24 DG 22 DCX 22 DD Silverstone Ruover	248 ee 250 ee 250 ee 250 ee 245 ee 225 ee 125 ee 250 ee	SEN.2001/00	SEN.2001/03		RE.1110/05	DF.1111/25	2'2"	86.1507/03 86.2410/00 (D)
	SCL Scooter	150 ee		SEN.3170/47				DF.1110/24	3'0"	86.5330/027		
	LI Coaset	100 ee		SEN.2001/00				DF.9110/00	4'7"	86.5330/047		
	L20 L20 S	199 ee 199 ee		SEN.2001/02				DF.9110/00	4'8"	86.5330/047		
	M25	150 ee		SEN.2001/00				DF.9110/00	4'5"	86.5330/047		
	M25 S M25 T	250 ee		SEN.2001/02 SEN.2001/00				DF.9111/00 DF.9110/00	3'4" 4'6"		86.5330/104	

A.	See Chart for separate Inner and Outer Drives	G.
B.	U.S.A. only	H.
C.	Trip Speedometer	J.
D.	Angle Drive (Instrument End)	K. Trip Reset (11-116-127-40 also required)
E.		L.
F.		M.

MAKE	MODEL & DESCRIPTION	SPZS DOMETEX		REV. INDICATOR	PLAIBLE DRIVE (A)		GEAR BOX
		MIANO	XILAS		COMPLETS	LENUTHE	
MATCHLESS	92 CSR Monitor Ninety 2.8cc	SSM.2001/02	SSM.2001/03	SSM.3003/00A (E)	DF.9110/00	5'2"	86.5330/857
	G3 Mercury	SSM.3002/00A	SSM.3002/01A		DF.9110/00	5'5"	86.5330/257
	G12 Majestic	SSM.3001/00A	SSM.3001/01A		DF.9111/03	2'8"	86.1508/05
	G12 CSR Monarch	SSM.3001/00A	SSM.3001/01A		DF.9110/00	5'7 1/2"	86.5330/206
(B)	G80 Major	SSM.3001/00A	SSM.3001/01A	SSM.3003/00A (E)	DF.9111/03	2'8"	86.1508/05
	G80CS	SSM.3001/00A	SSM.3001/01A		DF.9110/00	5'5"	86.5330/257
	G12 CSR	SSM.3001/00A	SSM.3001/01A		DF.9111/03	2'8"	86.1508/05
	G15 GS	SSM.3001/00A	SSM.3001/01A		DF.9110/00	5'2"	86.5330/857
HONDA	Jubilee Navigator	SSM.2001/02	SSM.2001/03	SSM.3003/00A (E)	DF.9110/00	5'2"	86.5330/257
	ESB	SSM.2001/02	SSM.2001/03		DF.9110/00	5'2"	86.5330/257
(B)	ES 400	SSM.3002/00A	SSM.3002/01A	SSM.3003/00A (E)	DF.9111/03	2'8"	86.1508/05
	88SS	SSM.3002/00A	SSM.3002/01A		DF.9110/00	5'9"	86.5330/257
(B)	650 SS Sports	SSM.3000/00A	SSM.3000/01A	SSM.3003/00A	DF.9111/03	2'8"	86.1508/05
	650/99	SSM.3000/00A	SSM.3000/01A		DF.9110/00	5'2"	86.5330/857
(B)	Atlas	SSM.3002/00A	SSM.3002/01A	SSM.3003/00A	DF.9110/00	5'2"	86.5330/857
	N ES	SSM.3002/00A	SSM.3002/01A		DF.9111/03	2'8"	86.1508/05
(B)	KL5 GS	SSM.3002/00A	SSM.3002/01A	SSM.3003/00A	DF.9110/00	5'2"	86.5330/857
	50 Mk. II	SSM.3002/00A	SSM.3002/01A		DF.9111/03	2'8"	86.1508/05
(B)	ES2 Mk. II	SSM.3002/00A	SSM.3002/01A	SSM.3003/00A	DF.9110/00	5'2"	86.5330/857
	ES2 Mk. II	SSM.3002/00A	SSM.3002/01A		DF.9111/03	2'8"	86.1508/05

A.	See Chart for separate Inner and Outer Drives.	G.
B.	U.S.A. Market	H.
C.		J.
D.		K.
E.	Optional	L.
F.		M.

MAKE	MODEL & DESCRIPTION	SPEEDOMETER		REV. INDICATOR	FLEXIBLE DRIVE (A)		GEAR BOX	FABRICUS	VARIOUS
		MILES	RILES		COMPLEX	LENGTH			
PHOENIX SCOOTERS	35 TS Twin	219 cc	SH.3170/03		SP.1111/15	3'1"	B6.2517/00	GEAR KING 31-412-117-02	6/8 PDMON 31-013-167
	100 Deluxe	598 cc	SSM.3002/00A	SSM.3002/01A	DP.9111/00	5'6"			
	120 S	645 cc							
	100 Standard								
	150 "								
	175 "								
	200 "								
	190 Super Deluxe								
	175 "								
	200 "								
TRIUMPH	3150 Self Start		SH.3170/10		DP.1106/24	5'3"	B6.5101/13		
	3175 "								
	3200 "								
	Super Deluxe Twin	250 cc	SH.3170/51		DP.1111/15	4'8"			
	T10 Scooter	97 cc	SSM.1100/00	SSM.1100/01	SP.7250/00	2'11 1/2"			
	T20 Tiger Cub	200 cc	SSM.2001/00	SSM.2001/03	SP.9110/00	4'10"	B6.5130/847		
	T20 Bantam Cub	200 cc	SSM.2001/00	SSM.2001/03	DP.5110/00	4'10 1/2"	B6.5130/847		
	T20 SH								
	T20 SR								
	T20 SM								
PHOENIX SCOOTERS	T20 Trials		SSM.2001/00	SSM.2001/03	SP.9110/00	4'10"	B6.5130/247	TRIP ROCKET 41-118-127-72	(K)
	37A Twisty One	348 cc	SSM.5002/00A (C)	SSM.5002/01A (C)	DP.5110/00	4'10"	B6.5130/267	TRIP ROCKET 41-118-203-10	(K)
	37A Speedtwin	490 cc			DP.5158/00	2'1 1/2"			
	T90 Tiger Sports	348 cc	SSM.5001/00A (C)	SSM.5001/01A (C)	DP.5110/00	4'10"	B6.5130/267	TRIP ROCKET 41-118-203-10	(K)
	T100 SC Tiger Sports	490 cc							
	T100 SR Tiger Sports	490 cc							
	T106 SR Trophy	649 cc	SSM.5001/00A (C)	SSM.5001/01A (C)	DP.9110/00	5'9"	B6.5130/267	TRIP ROCKET 41-118-203-10	(K)
	T106 SC Trophy	649 cc			DP.9158/00	2'1 1/2"			
	T120 Bonneville	649 cc							
	T120 Thurston-Bonneville	649 cc							
ST Thunderbird	649 cc	SSM.5002/00A (G)	SSM.5002/01A (G)	DP.9110/00	5'5"	B6.5130/267	TRIP ROCKET 41-118-127-72		

A.	See Chart for separate Inner and Outer Drives	G.
B.		H.
C.	Trip Speedometer	J.
D.		K.
E.	Optional	L.
F.		M.

Inner Flex Bulb 31-371-398-10 and Flex Washer 31-523-101 also required.



MAKE	MODEL & DESCRIPTION	SPEEDOMETER		REV. INDICATOR	FLEXIBLE DRIVES (A)		SERIES#	VARIANTS
		MILES	KILOM		COMPLETE	LENGTH		
VALVE	Venom Scooter 248 cc	SN.3170/32			DF.1111/17	5'7"		
	25 cc. III	SSL.2001/00	SSM.2001/03		DF.9111/01	2'9"		
	150 cc							
	Viper 349 cc	SSSL.0001/00A (C)	SSM.0001/01A (C)	SSM.3003/03 (B)	DF.9110/00 DF.9111/00 (S)	5'3" 5'3"		TRIP RESET 41-118-125-37
	Viper Clubman 349 cc							
	Serubbler 349 cc							
	25S 499 cc							
	Venom 499 cc							
	Venom Clubman 499 cc							
	Endurance 499 cc	SSM.5001/00A (C)	SSM.5001/02A (C)	SSM.5003/03 (B)	DF.9110/00 DF.9111/00 (S)	5'3" 5'3"		TRIP RESET 41-148-207-10
Serubbler 499 cc								
Venom Thruxton 499 cc								

A. See Chart for separate Inner and Outer Drives

B.

C. Trip Speedometer

D.

E. Optional

F.

## FLEXIBLE DRIVE CHART

Flexible Drive (Complete)	Inner Flexible Drive (Only)	Outer Flexible Drive (Only)	Flexible Drive (Complete)	Inner Flexible Drive (Only)	Outer Flexible Drive (Only)
DF.1125/14	DF.1124/00	DF.1105/14	DF.7231/00	(Non Detachable)	
DF.1110/00	DF.1110/00	DF.1110/00	DF.7250/00	(Non Detachable)	
DF.1110/20	DF.1124/00	DF.1110/20	DF.9106/01	DF.1124/05	DF.9106/01
DF.1110/21	DF.1124/00	DF.1110/21	DF.9110/00	DF.1124/05	DF.9110/00
DF.1110/24	DF.1124/00	DF.1110/24	DF.9110/02	DF.1124/06	DF.9110/02
DF.1110/30	DF.1124/00	DF.1110/30	DF.9111/00	DF.1124/06	DF.9111/00
DF.1111/00	DF.1110/02	DF.1111/00	DF.9111/01	DF.1124/06	DF.9111/01
DF.1111/02	DF.1110/02	DF.1111/02	DF.9111/02	DF.1124/06	DF.9111/02
DF.1111/15	DF.1111/00	DF.1111/09	DF.9111/03	DF.1124/06	DF.9111/03
DF.1111/17	DF.1111/00	DF.1111/11	DF.9158/00	DF.1124/07	DF.9158/00

The above chart shows the code numbers of the separate inner and outer flexible drives which form the complete flexible drives listed in the specification section of this booklet.

# SMITHS

## Motor Cycle Equipment

Illustrated on these pages is a representative range of the most popular types of Smiths motor cycle equipment.

### Speedometer 3" Chronometric Type

The movement is contained in a heavy pressed steel case, specially treated internally and externally against rust. The case is finished in black enamel and the screwed-on bezel is polished chromium plate. Also available with flange bezel and cadmium finished case for nacelle or headlamp installation.

Dial black with white figures and available with or without internal illumination.



### 60 mm. Speedometer

Nemag movement also for lightweight motor cycles. Strap or handle-bar fixing. Variety of dial colourings to choose from.

### 60 mm. Revolution Indicators

Revolution Indicators to match the 60 mm. speedometer are available. Maximum revolutions per minute, ratio and rotation available in any combination of the following:

MAX. R.P.M. 10,000 12,000 16,000

RATIO 2:1 4:1 4:1

ROTATION Clockwise or anti-clockwise.



### 80 mm. 'Shallow' Speedometer.

Magnetic Type with Anti-vibration mounting incorporated in the instrument case and fully geared counter assembly to eliminate 'slip' or 'jumping'.

The movement is contained in a pressed steel case, specially treated internally and externally against rust. White figures, red pointer on duogrey dial.

Provision for internal illumination. Suitable Flexible Drive, DF.9110/00 or DF.9111/00 Series.

For full details of matching

60 and 80 mm Revolutions Indicators, see separate leaflet Ref. No. S.909.



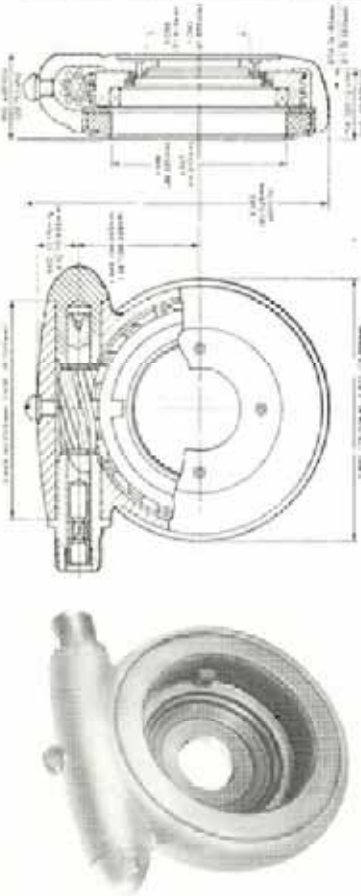
### 60 mm. 'Shallow' Speedometer.

Magnetic Type for Lightweight Motor Cycles. Anti-vibration mounting incorporated in the instrument case and fully geared counter assembly, to eliminate 'slip' or 'jumping', are important features of these new instruments.

Light grey dial with dark grey figures and red pointer. Polished Stainless Steel bezel. Internal illumination.

Suitable Flexible Drive, DF.9110/00 or DF.9111/00 Series.

All Smiths motor cycle speedometers are available to register either miles or kilometers per hour.



**Gear Box Code No. BG.5330 & BG.5331 Series**

(Replacing 52283/50-88, BG.5101 & BG.5103 Series)

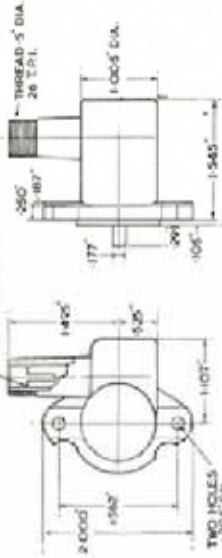
This hub gear box has a thicker body section than those in the BG. 5303 Series (Previously 52283 1-49 Series) and uses the larger felt seal. It can be used where the hub is slotted to provide the necessary engagement or where other provision can be arranged. Clockwise or anti-clockwise input. Ratios: 1:1 & 2:1  
Suitable Flexible Drive DF.9110 or DF.9111 Series.



FLEX COMPLETE DF.9111/00 INNER DI1124/06 OUTER DO.9111/00



SMD SUITABLE FOR SMITHS 'C' TYPE FLEX



**Gear Box Code No. BG. 1508 Series (Replacing 70549 Series)**

These gear boxes reverse the rotation of the shaft to which they are attached. The rotation is determined by locking immediately on to the end of the engine spindle with which the gear box or flexible drive is engaged.  
Plain phosphor bronze bearings. Ratios 1:1 and 2:1.  
Suitable Flexible Drive DF. 1111 15 (Black PVC) or DF. 1111 12 (Grey PVC)



FLEX COMPLETE DF.9116/00 INNER DL1124/05 OUTER DO.9110/00

The nominal length of a flexible drive is measured between points 'A' and 'B'

TREK SEATBELTS & INVALID CARRIAGES

MAKE	MODEL & DESCRIPTION	SPEEDOMETER		REV. INDICATOR	FLEXIBLE DRIVES (A)		COILBOX	GLASS MING	GEARBOX POSITION	GEARBOX BRACKET
		MILES	KILOM		COMPLETS	LENGTH				
W & P HARGRETT BOND	Invalid Carriage	SH.3170/52			SP.1111/27	5'0"	36.2507/01	31-812-303-02		
	MK '3' 2/5 Seater Tourer	SN.4352/00 (B) SN.4352/01			SP.1111/00	8'6"				
	MK '3' 2/5 Seater Coupe									
	MK '3' 4 Seater Saloon									
	MK '3' Ranger Van									
MK '3' Estate Car										
SCOOTER-CAR (HUNLEY)	TS Deluxe Threewheeler 200 cc	SH.3170/05			SP.1111/02	6'9 1/2"				
	TS Deluxe Twin Threewheeler 250 cc	SH.3170/15			SP.1111/02	6'6"				
STANLEY SCUNLORLING	MK 7 Invalid Carriage	SH.3170/21			SP.1111/00	8'0"	36.2504/01	31-811-517-02	11-280-118-00	31-35-601-00
	Delta Invalid Carriage	SH.3170/33			SP.1111/15	8'0"	36.2507/09		11-280-118-00	

A.	See Chart for separate Inner and Outer Drives	G.
B.	Fitted to Van only	H.
C.		I.
D.		J.
E.		K.
F.		L.
		M.



**SMITHS INDUSTRIES LIMITED**

**MOTOR ACCESSORY DIVISION**

**HEAD OFFICE:-  
CRICKLEWOOD WORKS  
LONDON NW2**

Tel: GLAdstone 3333

**SALES AND SERVICE:-  
50 OXGATE LANE  
LONDON NW2**

Tel: GLAdstone 8030

Grams: Speedofac, London Telex: 22671